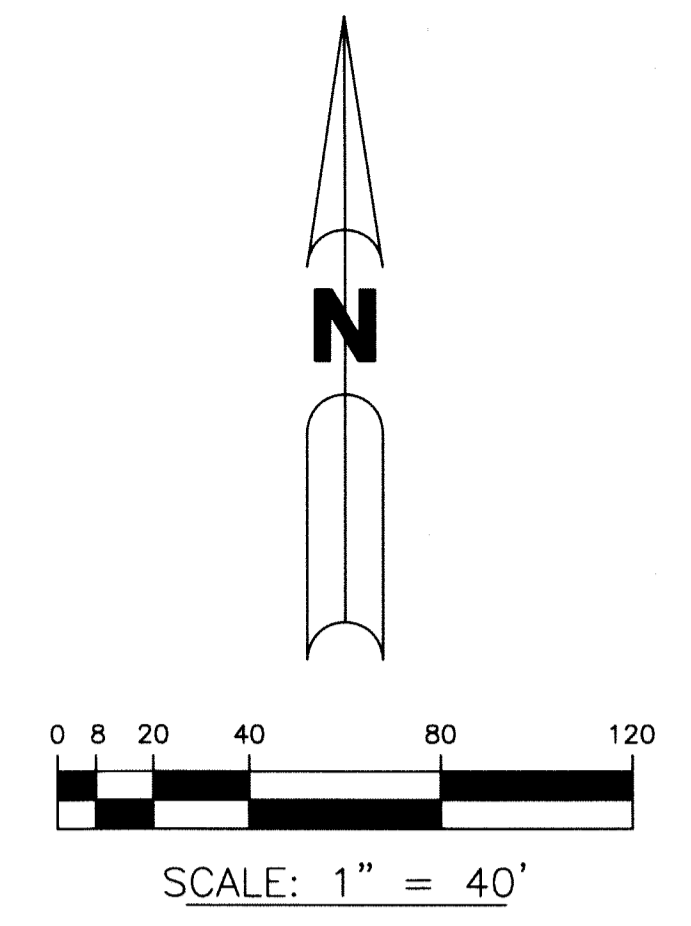
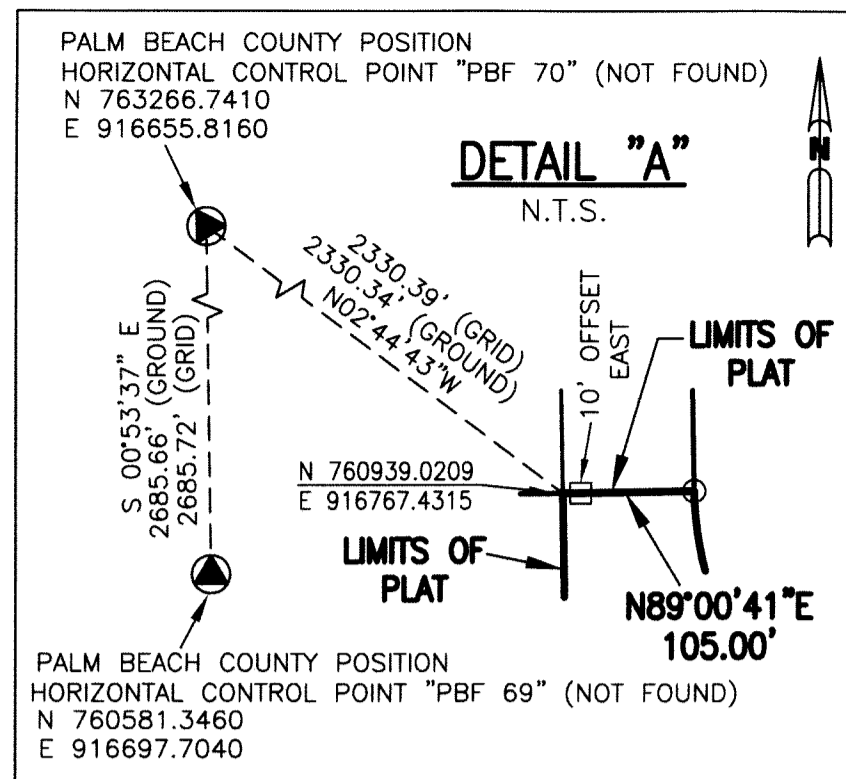


HYDER AGR-P.U.D. - PLAT NINE

BEING A REPLAT OF A PORTION OF TRACTS "A", "OS-5" AND ALL OF TRACT "OS-7", "OS-8" AND "OS-12", ACCORDING TO THE PLAT OF HYDER AGR-P.U.D. - PLAT FOUR, AS RECORDED IN PLAT BOOK 119, PAGES 11 THROUGH 20, PUBLIC RECORDS, PALM BEACH COUNTY, FLORIDA, LYING WITHIN SECTION 30, TOWNSHIP 46 SOUTH, RANGE 42 EAST, PALM BEACH COUNTY, FLORIDA

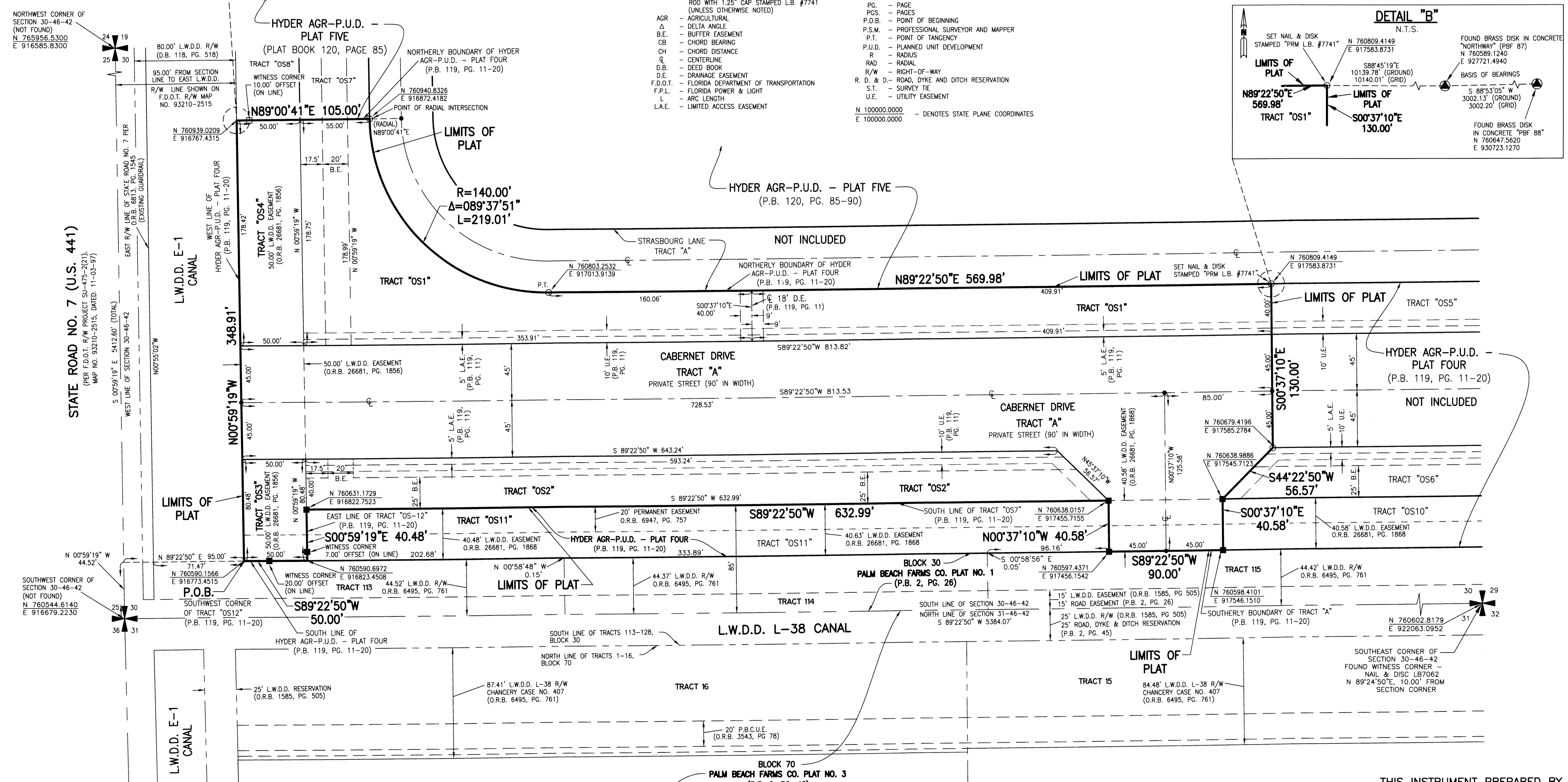
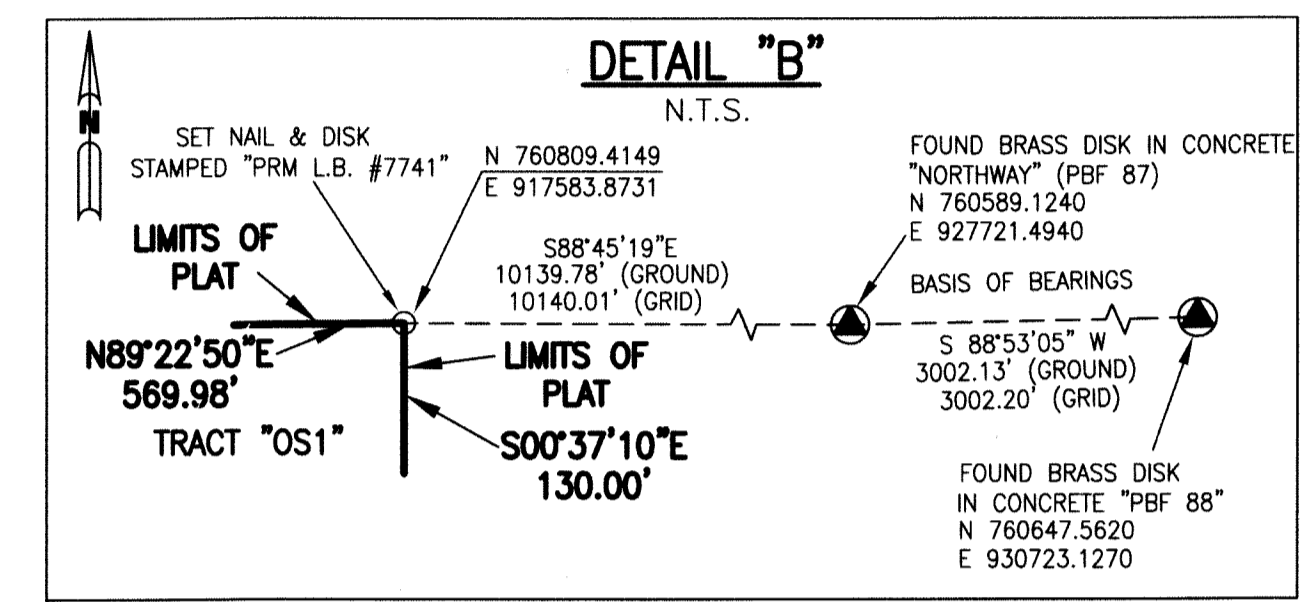
SHEET 2 OF 2

57



LEGEND:

■	SET PERMANENT REFERENCE MONUMENT 4"x4" CONCRETE MONUMENT WITH 1.5" DISK STAMPED L.B. #7741	L.B.	LICENSED BUSINESS
□	FOUND PERMANENT REFERENCE MONUMENT 4"x4" CONCRETE MONUMENT WITH 1.5" DISK STAMPED L.B. #7741	L.M.E.	LAKE MAINTENANCE EASEMENT
●	SET PERMANENT CONTROL POINT NAIL WITH 1.25" DISK STAMPED L.B. #7741	L.W.D.D.	LAKE WORTH DRAINAGE DISTRICT
○	SET PERMANENT REFERENCE MONUMENT 5/8" IRON ROD WITH 1.25" CAP STAMPED L.B. #7741 (UNLESS OTHERWISE NOTED)	N.R.	NOT RADIAL
AGR	AGRICULTURAL	N.T.S.	NOT TO SCALE
Δ	DELTA ANGLE	O.E.	OFFICIAL RECORD BOOK
B.E.	BUFFER EASEMENT	O.E.	MAINTENANCE & ROOF OVERHANG EASEMENT
CB	CHORD BEARING	P.B.C.U.E.	PALM BEACH COUNTY UTILITY EASEMENT
CH	CHORD DISTANCE	P.B.	PLAT BOOK
CL	CENTERLINE	P.C.P.	PERMANENT CONTROL POINT
D.B.	DEED BOOK	PG.	PAGE
D.E.	DRAINAGE EASEMENT	POS.	PAGES
F.D.O.T.	FLORIDA DEPARTMENT OF TRANSPORTATION	P.O.B.	POINT OF BEGINNING
F.P.L.	FLORIDA POWER & LIGHT	P.S.M.	PROFESSIONAL SURVEYOR AND MAPPER
L	ARC LENGTH	P.T.	POINT OF TANGENCY
L.A.E.	LIMITED ACCESS EASEMENT	P.U.D.	PLANNED UNIT DEVELOPMENT
		R	RADIUS
		RAD	RADIAL
		R/W	RIGHT-OF-WAY
		R.D. & D.	ROAD, DYKE AND DITCH RESERVATION
		S.T.	SURVEY TIE
		U.E.	UTILITY EASEMENT
		N 1000000.0000 E 1000000.0000	- DENOTES STATE PLANE COORDINATES



THIS INSTRUMENT PREPARED BY
PERRY C. WHITE, P.S.M. 4213, STATE OF FLORIDA
SAND & HILLS SURVEYING, INC.
8461 LAKE WORTH ROAD, SUITE 410
LAKE WORTH, FLORIDA 33467
LB-7741